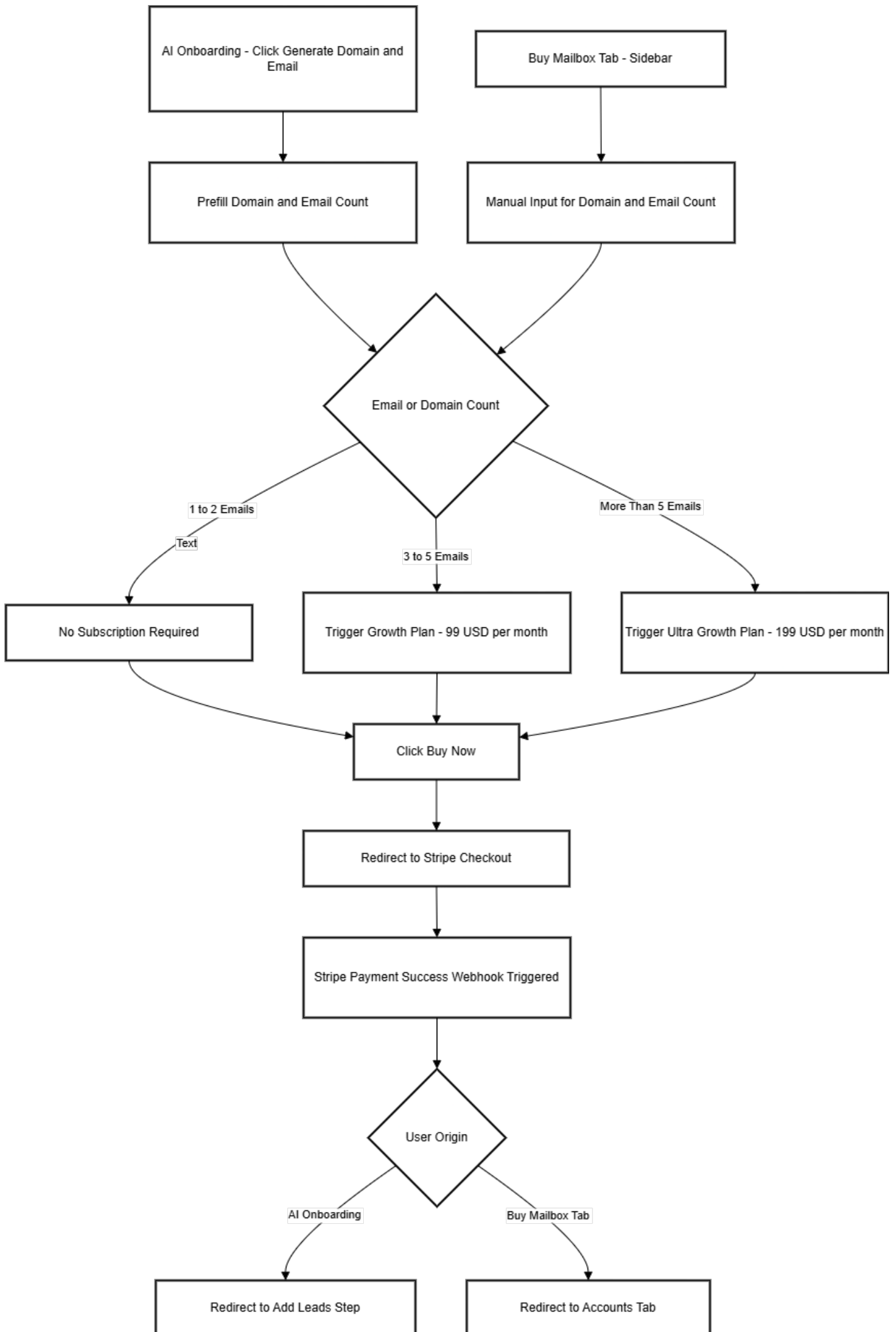


# Purchase flow

- [Purchase flows \(For Domain and Emails\)](#)

# Purchase flows (For Domain and Emails)



# urpose

This flow outlines how users can buy email mailboxes through two different paths in the Parakeet app—either via the **AI Onboarding Flow** or the **Buy Mailbox Tab** from the sidebar. Based on the number of mailboxes requested, a relevant **Stripe subscription tier** is triggered.

## ? Entry Points

### 1. AI Onboarding Flow → Generate Domain and Email

- Appears during onboarding campaign setup.
- Domain and email counts are **pre-filled** based on earlier inputs.
- Default prefill: **2 domains, 2 emails per domain** → total **4 emails**.

\*\*[Insert Screenshot Here: Prefilled form from AI flow]\*\*

### 2. Sidebar → Buy Mailbox Tab

- Accessed from Accounts tab in sidebar navigation.
- Domain and email count are **blank** by default.
- Users **manually input** values.

\*\*[Insert Screenshot Here: Empty form in sidebar flow]\*\*

## ? Input Fields

Field	Description	Prefilled in AI?	Required
Domain Count	Number of domains to register	Yes	Yes
Emails per Domain	Emails to generate per domain	Yes (default: 2)	Yes

■

- Users can modify the default values.
- **Max limits:** 50 domains × 50 emails = **2,500 emails max**

## ? Subscription Tiers

Total Email Count	Subscription Requirement
1-2	No subscription required
3-5	<b>Growth Plan</b> - \$99/month
6+	<b>Ultra Growth</b> - \$199/month

■

- User does **not** pick a plan manually.
  - Stripe plan is determined based on calculated need.
- 

## ? Purchase Flow Steps

1. User fills or sees pre-filled domain + email count.
  2. System calculates total required emails.
  3. Based on count, appropriate subscription tier is selected.
  4. User clicks **Buy Now**.
  5. Redirected to **Stripe Checkout**.
  6. On payment success, system triggers a **Stripe webhook**.
  7. Based on origin of flow:
    - From AI onboarding → User returns to **Add Leads** step.
    - From Buy Mailbox tab → Redirected to **Accounts Tab**.
- 

## ? Stripe Processing Logic (Auto-Routed)

- If  $3 \leq \text{total emails} \leq 5$  → routed to Growth (\$99/month).
- If  $\text{total emails} > 5$  → routed to Ultra Growth (\$199/month).